

## Revolutionize Your Metalworking with MSC and Kennametal



Discover the cutting-edge solutions from Kennametal, designed to enhance your metalworking efficiency and precision. This promotion brings you the best-in-class tools and technologies from a leader in the industry.

### **HARVI™ IV 8-Flute End Mills**

Get Unfamiliar  
With Downtime



### **KCU10B**

Consistent cuts from one  
material to the next.



### **KCP25C**

**STEEL TURNING GRADE  
WITH KENGold™ CVD  
COATING TECHNOLOGY**

Predictable Performance  
Turn After Turn



Contact us today to learn more about how Kennametal can transform your metalworking operations.



# Turning Inserts

## KENAMETAL KCP25C Steel Turning Inserts

**NEW**



5 Inserts  
Per Package

- Steel Turning Grade with KENGold™ CVD Coating technology
- Featuring uniform layers that resist abrasion
- Reduces waste of unused edges by offering easy identification of worn or unused edges
- Resists wear and provides a strong thermal barrier
- Increases output rate reliability and has consistent tool life

Description	Order Number
CNMG432FV	KMT7064027
DNMG432FV	KMT7064032
CNMG432MV	KMT7036146
DNMG432MV	KMT7036160
VNMG332MV	KMT7036174
WNMG432MV	KMT7036177
CNMG432RN	KMT7026599
CNMG432RP	KMT7026596
CNMG543RN	KMT7026646

## KENAMETAL KCU10B Turning Inserts

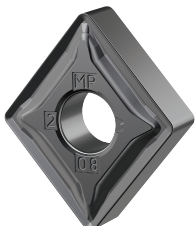
**NEW**



- KCU10B upgrades Kennametal's existing universal turning grade KCU10 with a newly engineered KENGold™ PVD multilayer coating
- TiSiN top layer is gold for easy wear identification
- AlTiSiN second layer is a super-hard nanostructured interlayer for superior wear resistance
- AlTiN third layer is a low-stress base layer for excellent flaking resistance
- Multilayer coating applied to cemented carbide delivers greater thermal deformation resistance and exceptional edge wear resistance

Description	Pkg. Qty.	Order Number
CNMG432MP	5	KMT7093477
CNMG432RP	5	KMT7093479
VPGR332	5	KMT7096333
CNGP432	5	KMT7093226
CPGT2151LF	5	KMT7093812
DCMT3251LF	5	KMT7093820
EG0400M04P04GUP	10	KMT7096848

## KENAMETAL KCS10B Turning Grade Inserts for High Temp Alloys



10 Inserts  
Per Package

KCS10B is a turning grade ideal for medium machining and finishing operations on extremely hard and wear-resistant, ultra fine-grade carbide substrates that features new High-Power Impulse Magnetron Sputtering PVD coating technology.

- High depth-of-cut notching resistance
- Ideal for iron-based alloys, cobalt-based alloys and nickel-based alloys
- Smooth coating surface
- Optimum layer adhesion, especially on sharp edges
- Long tool life and high process stability

Ships directly from manufacturer and may require a longer lead time.

Description	Order Number
CNGG432FS	KMT6756004
CNMG432FP	KMT6687082
CNMG432MS	KMT6687085
CNMG432MP	KMT6687089
DNGG432FS	KMT6756009
DNGG442FS	KMT6756013
DNMG332FP	KMT6687103
DNMG432FP	KMT6763674
DNMG432MP	KMT6763683
DNMG432MS	KMT6763679
DNMG442FP	KMT6687105
DNMG442MP	KMT6687123
DNMG442MS	KMT6687109
VNMG332FS	KMT6756018
VNMG332FP	KMT6687126
VNMG332MP	KMT6687134
VNMG332MS	KMT6687129
VNMG432MS	KMT6687132

# End Mills



## 5 Flute HARVI II™ Corner Radius End Mills



- 38° helix
  - For stainless steel, carbon steels, hardened steels and other difficult-to-machine materials
  - 5-flute geometry enables slotting up to 1xD
  - Unequal flute spacing minimizes chatter for smoother machining
  - Single tool for roughing and finishing
  - Improved resistance to cratering, flank wear and depth-of-cut notching
  - Corner radius strengthens the corner of the cutting end and allows for longer tool life
- AlTiN (Aluminum Titanium Nitride) Coated**
- For aggressive machining of aircraft/aerospace materials, stainless steels, high-alloy carbon steels, nickel-based, high-temperature alloys and titanium alloys. Used in dry machining of cast irons, nodular iron and selected carbon steel
  - Provides increase of 75 to 100% in machining speeds vs. uncoated tools

Mill Dia.	Shank Dia.	LOC	OAL	Corner Radius	Order Number
3/16"	3/16"	5/8"	2 1/4"	0.015"	KMT4048709
3/16"	3/16"	5/8"	2 1/4"	0.030	KMT4048710
1/4"	1/4"	3/4"	2 1/2"	0.015	KMT4048712
1/4"	1/4"	3/4"	2 1/2"	0.030	KMT4048713
5/16"	5/16"	3/4"	2 1/2"	0.015	KMT4048715
5/16"	5/16"	3/4"	2 1/2"	0.030	KMT4048716
3/8in	3/8in	7/8in	2 1/2in	0.015	KMT4048718
3/8in	3/8in	7/8in	2 1/2in	0.030	KMT4048719
1/2"	1/2"	1 1/4"	3"	0.015	KMT4048721
1/2in	1/2in	1 1/4in	3in	0.030	KMT4048722
1/2"	1/2"	1 1/4"	3"	0.060	KMT3899140
3/4"	3/4"	1 1/2"	4"	0.030	KMT4048733
3/4"	3/4"	1 1/2"	4"	0.120	KMT4048736

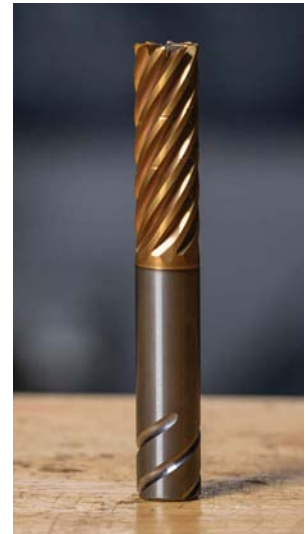


## HARVI IV 8-Flute End Mill

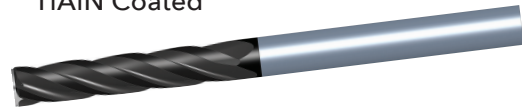


- 8-flute design increases productivity with higher machining flexibility and process stability
- Featuring new KCSM15A grade with innovative coating technology for extended tool life and wear resistance
- Internal coolant supply clears chips for continued cutting, even in deep cavities
- Diameter range 3/8-1", 10-25mm
- Length range 1.2-4.3xD

Mill Dia.	Shank Dia.	OAL	Order Number
3/8"	3/8"	2 1/2"	KMT7102409
1/2"	1/2"	3"	KMT7102428
1/2"	1/2"	3"	KMT7102434
3/4"	3/4"	3 1/2"	KMT7102454
1"	1"	5"	KMT7102480



## GOmill™ 2 & 4 Flute Carbide End Mills TiAlN Coated



Mill Dia.	Shank Dia.	LOC	OAL	2 Flute Order Number	4 Flute Order Number
1/16"	1/8"	7/64"	1 1/2"	—	KMT6086555
1/8"	1/8"	1/2"	1 1/2"	—	KMT6086562
1/8"	1/8"	1"	3"	—	KMT6086564
3/16"	3/16"	5/8"	2"	—	KMT6086568
7/32"	1/4"	7/16"	2"	—	KMT6086573
1/4"	1/4"	1/2"	2"	KMT6086399	KMT6086576
5/16"	5/16"	13/16"	2 1/2"	—	KMT6086584
3/8"	3/8"	1 3/4"	4"	—	KMT6086593
1/2"	1/2"	1"	3"	—	KMT6086334
5/8"	5/8"	4"	7"	—	KMT6086513
3/4"	3/4"	1"	3"	KMT6086449	KMT6086515

- Offers plunging, slotting and profiling on a wide range of workpiece materials
  - Designed for roughing and finishing with one tool
  - Eccentric relief eases regrinding and reduces reconditioning cost
  - 2 Flute design for unstable conditions and high flexibility
  - 4 Flute design for high MRR and reduction of operating time
- Provides outstanding protection for solid carbide tools against cratering and abrasion.**

### TiAlN Coated

- Used for aggressive machining of aircraft/aerospace materials, stainless steels, high-alloy carbon steels, nickel-based, high temperature alloys and titanium alloys
- Also used in dry machining of cast irons, nodular iron and selected carbon steel
- Provides increase of 75 to 100% in machining speeds vs. uncoated tools

Ships directly from manufacturer and may require a longer lead time.

Contact us today at 800.265.3541

# End Mills/Taps



## KOR 5DS Corner Radius End Mills for Steel & Stainless Steel AlTiN Coated



KOR Series end mills maximize the capabilities of 5-axis machines using CAM tool path generation software. These high-performance end mills are designed for dynamic milling with low radial engagement and full length of cut. The KOR 5DS is designed specifically to be a dynamic rougher in steel and stainless steel applications.

- Helix angles tailored to target material to minimize vibration and optimize tool life
- With chip deformers for near-perfect chip management at high surface quality
- SAFE-LOCK™ and Weldon® shanks available for pullout protection
- 3xD and 5xD with plain and Weldon shanks available



Mill Dia.	LOC	OAL	Corner Radius	Order Number
1/4"	3/4"	2 1/2"	0.03"	KMT6769720
3/8"	1 1/8"	3"	0.03"	KMT6769781
1/2"	2 1/2"	5"	0.03"	KMT6764472
3/4"	2 1/4"	5"	0.06"	KMT6769784
1"	3"	6"	0.06"	KMT6769792



## HSS Metric Spiral Point Plug Style Taps



### 3-5 Threads Chamfer

- Shoots chips ahead of the cutting action, reducing loading and clogging in the flutes
- Ground thread for better surface finish and tighter tolerances
- Most efficient and useful cutting tap
- Best used for tapping through holes
- Ideal for threading a wide variety of ductile materials, steels, copper, copper alloys, brass and plastics

Thread Size	Thread Limit	No. of Flutes	OAL	Order Number
M1.6x0.35	D3	2	1 5/8"	KMT4130612
M2x0.40	D3	2	1 3/4"	KMT1543717
M2.5x0.45	D3	2	1 19/16"	KMT1543733
M3x0.50	D3	2	1 15/16"	KMT1543738
M4x0.70	D4	2	2 1/8"	KMT1543749
M6x1.00	D5	2	2 1/2"	KMT1544092
M8x1.25	D5	2	2 23/32"	KMT1544101
M10x1.50	D6	3	2 15/16"	KMT1544109
M12x1.75	D6	3	3 3/8"	KMT1544114
M16x2.00	D7	3	3 13/16"	KMT4131823
M20x2.50	D7	3	4 15/32"	KMT1544152

For complete line see page 297 in the V24 Big Book.



### Uncoated

Recommended for through holes in most materials.



### Oxide Coated

Prevents galling and welding in ferrous materials (iron based).



### TiN Coated

For higher tapping speeds in a wide range of materials.



### TiCN Coated

For tough machining steels, ductile cast iron, cast aluminum, stainless steel, high temperature alloys, copper alloys and titanium when using higher tapping speeds.

Thread Size	Thread Limit	OAL	Uncoated Order Number	Oxide Coated Order Number	TiN Coated Order Number	TiCN Coated Order Number
<b>2 Flute</b>						
#0-80	H2	1.63"	KMT4130422	—	—	—
#2-56	H2	1.75"	KMT1540362	KMT4131170	KMT1544798	—
#4-40	H2	1.88"	KMT1540442	KMT4131171	KMT1544800	KMT4131260
#6-32	H3	2.00"	KMT1541545	KMT4131184	KMT1544804	KMT4131262
#8-32	H3	2.13"	KMT1541345	KMT4131186	—	—
#10-24	H3	2.38"	KMT1541632	KMT4131192	KMT4130683	KMT1779085
#10-32	H3	2.38"	KMT1542112	KMT4131214	KMT1544812	KMT1779088
1/4"-20	H3	2.50"	KMT1542158	KMT4131190	KMT1544817	—
1/4"-28	H3	2.50"	KMT1542258	KMT4131191	KMT4130672	—
5/16-18	H3	2.72"	KMT1542465	—	KMT1544852	—
5/16-24	H3	2.72"	KMT1542586	KMT4131220	KMT1544853	—
<b>3 Flute</b>						
3/8-16	H3	2.94"	KMT1542598	KMT4131216	KMT1544854	KMT1779105
3/8-24	H3	2.94"	KMT1542613	—	—	—
7/16-14	H3	3.16"	KMT1542654	KMT4131222	KMT1544856	—
1/2-13	H3	3.38"	KMT1542871	KMT4131187	KMT1545200	KMT4131257
5/8-11	H3	3.81"	KMT1542894	KMT4131221	KMT1545209	KMT4131258

For complete line see pages 288, 290 & 292-294 in the V24 Big Book.